

[View PDF Print Email](#)

PORT AUTHORITY.

Port Authority® Short Sleeve UV Daybreak Shirt W961

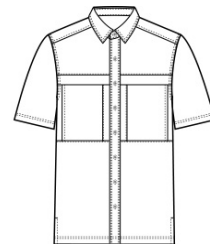


Sun and moisture are no problem for this versatile, lightweight, highly breathable shirt. Relaxed styling makes it perfect for outdoor or indoor wear.

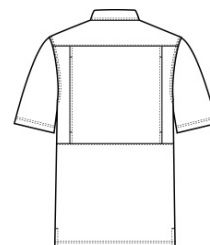
- 2.2-ounce, 100% polyester poplin
- 2.5-ounce, 100% polyester poplin (White)
- Moisture-wicking
- UPF rating of 30
- Hidden button-down collar
- Dyed-to-match buttons
- Two chest pockets with concealment flaps and hook and loop closures
- Vented back panel with mesh ventilation
- Straight hem with side vents

CARE INSTRUCTIONS

Fabric & Mesh Trim: 100% Polyester. Fasten Closures. Hook & Loop Before Washing. Do Not Wring. Machine Wash Cold Gentle Cycle With Like Colors. Only Non-Chlorine Bleach If Needed. Fabric Softener Not Recommended. Tumble Dry Low. Remove Promptly.

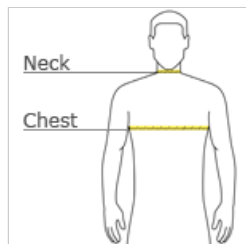


front



back

HOW TO MEASURE



CHEST WIDTH

Measure under the arm and around the fullest part of the chest with arms down, keeping tape horizontal.

NECK

Measure around the fullest part of the neck at the base.

SIZE CHART

	XS	S	M	L	XL	2XL	3XL	4XL
Chest	32-34	35-37	38-40	41-43	44-46	47-49	50-53	54-57
Neck	14 1/2-15	15-15 1/2	15 1/2-16	16-16 1/2	16 1/2-17	17-17 1/2	17 1/2-18	18-18 1/2

COLOR INFORMATION



Deep Black
PMS BLACK C



Gusty Grey
PMS COOL GREY
8C



Light Blue
PMS 644C



Oat
PMS NO MATCH



True Navy
PMS 533C



White