

**PORT AUTHORITY.**

## Port Authority® Long Sleeve Ombre Plaid Shirt W672



Casual and cool, this unique ombre plaid shirt is perfect for a uniform look that is laid back, yet polished.

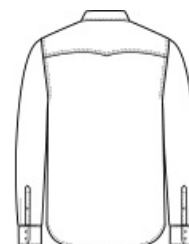
- 4.6-ounce, 59/39/2 cotton/polyester/spandex
- Lightly brushed twill plaid
- Easy Care
- Open collar
- Bias-cut back yoke
- Double-chest pockets with bias-cut button flaps
- Pearlized buttons
- Double-button cuffs

### CARE INSTRUCTIONS

Machine Wash Cold With Like Colors. Only Non-Chlorine Bleach If Needed. Tumble Dry Low. Warm Iron If Needed.

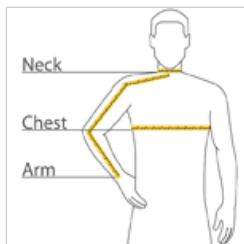


front



back

### HOW TO MEASURE



#### CHEST WIDTH

Measure under the arm and around the fullest part of the chest with arms down, keeping tape horizontal.

#### NECK

Measure around the fullest part of the neck at the base.

#### ARM

Place hand on hip. Start at the center of the back of the neck and measure across the shoulder, to the elbow, and then down to the wrist.

### SIZE CHART

	XS	S	M	L	XL	2XL	3XL	4XL
Chest	32-34	35-37	38-40	41-43	44-46	47-49	50-53	54-57
Neck	14 1/2 - 15	15 - 15 1/2	15 1/2 - 16	16 - 16 1/2	16 1/2 - 17	17 - 17 1/2	17 1/2 - 18	18 - 18 1/2
Arm	30 1/2	32	34	35	36 1/2	37 1/2	38 1/2	39 1/2

### COLOR INFORMATION



Deep Black  
PMS BLACK C



Frost Grey



True Navy