



## TravisMathew Balboa Hooded Full-Zip Jacket TM1MZ338



Take life at ease in this lightweight jacket, whether you're commuting, hanging out or playing eighteen. Designed with that keen TravisMathew eye for layering comfort and quick-dry performance, this lightweight jacket has elevated style and easy movement.

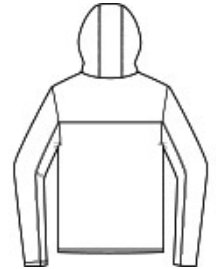
- 4.2-ounce, 90/10 polyester/spandex
- Easy wash and wear
- Three-panel hood with dyed-to-match drawcords
- Zippered side-entry pockets
- TM logo woven patch label at left hem

### CARE INSTRUCTIONS

Machine Wash Cold With Like Colors. Gentle Cycle. Tumble Dry Low. Remove Promptly. Cool Iron If Needed.

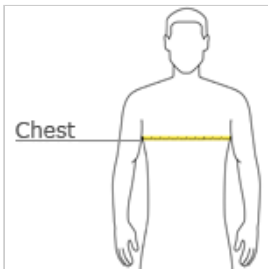


front



back

### HOW TO MEASURE



#### CHEST WIDTH

Measure under the arm and around the fullest part of the chest with arms down, keeping tape horizontal.

### SIZE CHART

	S	M	L	XL	2XL	3XL
Chest	35-37	38-40	42-44	45-47	48-50	52-54

### COLOR INFORMATION



Black  
PMS 426C



Blue Nights Heather  
PMS 432C



Dark Grey Heather  
PMS 425C