



## TravisMathew Ladies Long Weekend Crew TM1LD003



Remember that long weekend feeling any day of the week in this versatile, comfortable crew that can worn at work or while hanging out.

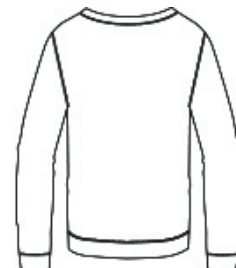
- 7.2-ounce, 73/22/5 modal/polyester/elastane
- Easy wash and wear
- Rib knit notch detail at collar
- Drop tail hem with scallop detailing
- TM logo woven label at left hem

### CARE INSTRUCTIONS

Machine Wash Cold With Like Colors. Gentle Cycle. Non Chlorine Bleach. Tumble Dry Low. Remove Promptly. Cool Iron If Needed.

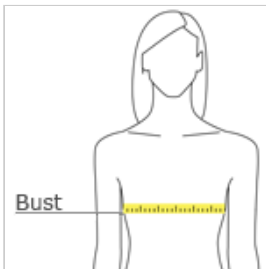


front



back

### HOW TO MEASURE



#### BUST

Measure under the arm and around the fullest part of the bust with arms down, keeping tape horizontal.

### SIZE CHART

	S	M	L	XL	2XL
Size	4/6	8/10	12/14	16/18	20/22
Bust	33-35	35-37	37-39 1/2	40-42 1/2	42 1/2-45

### COLOR INFORMATION



Blue Nights Heather  
PMS 432C



Dark Grey Heather  
PMS 425C



Light Grey Heather  
PMS COOL GREY  
8C