



Keep a cooler head in this knit cap that features a textured moisture-wicking lining.

- Fabric: 60/40 cotton/acrylic, 100% polyester lining

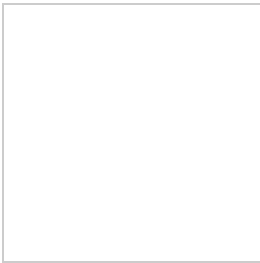
**CARE INSTRUCTIONS**

[Tips For Effectively Screen Printing Polyester Fabrics](#)



front

**HOW TO MEASURE**



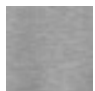






**HATS**

Measure the circumference around the head, above the eyebrow and at the widest part of the head. Divide number by 3.14 for hat size.

**SIZE CHART**

	OSFA
Hats	N/A

**COLOR INFORMATION**

						
Athletic Heather PMS 428 C	Black PMS NTR BLACK C	Forest Green PMS 5605 C	Maroon PMS 504 C	True Navy PMS 533 C	True Red PMS 200 C	True Royal PMS 7687 C