



# Sport-Tek® PosiCharge® Competitor™ Polo. ST550



Our #1 performance tee fabric offered in a color-locking, moisture-wicking polo to expand your uniforming options.

- 3.8-ounce, 100% polyester interlock with PosiCharge technology
- Flat knit collar
- Removable tag for comfort and relabeling
- Taped neck
- 3-button placket with dyed-to-match buttons
- Set-in, open hem sleeves

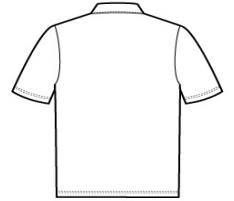
*Due to the nature of 100% polyester performance fabrics, special care must be taken throughout the printing process.*

**CARE INSTRUCTIONS**

Machine wash cold with like colors. Only non-chlorine bleach. When needed tumble dry low, remove promptly. Cool iron if needed. Do not use softener. Do not dry clean.

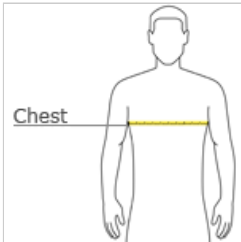


front



back

**HOW TO MEASURE**



**CHEST WIDTH**

Measure under the arm and around the fullest part of the chest with arms down, keeping tape horizontal.

**SIZE CHART**

	XL	2XL	XS	S	M	L	3XL	4XL
Chest	44-46	47-49	32-34	35-37	38-40	41-43	50-53	54-57

**COLOR INFORMATION**

Atomic Blue PMS 2203C	Black PMS NTR BLACK C PMS 7454C	Carolina Blue PMS 7454C	Forest Green PMS 553C	Iron Grey PMS 7540C	Maroon PMS 504C	Purple PMS 7672C	Silver PMS 429C	True Navy PMS 533C	True Red PMS 200C	True Royal PMS 7686C
White PMS WHITE										