



## New Era® Power Polo NEA225



With moisture wicking and stretch, you'll feel the power of performance in this polo that's also brushed for comfort.

- 4.7-ounce, 91/9 polyester/spandex
- Self-fabric collar
- Debossed New Era neck taping
- Heat transfer label for tag-free comfort
- Raglan sleeves
- 3-button placket with branded New Era buttons
- Reflective silver heat transfer New Era flag logo on left sleeve

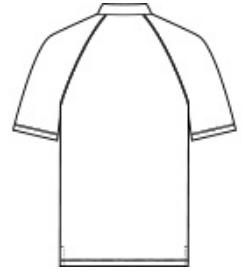
*The purchase of branded and private label products are subject to certain guidelines. For more information about these requirements, see our branded and private label sales policies.*

### CARE INSTRUCTIONS

Machine Wash Cold With Like Colors. Do Not Use Fabric Softener. Only Non-Chlorine Bleach When Needed. Tumble Dry Low. Remove Promptly. Cool Iron If Necessary.

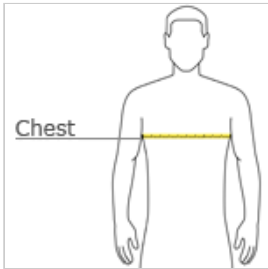


front



back

### HOW TO MEASURE



#### CHEST WIDTH

Measure under the arm and around the fullest part of the chest with arms down, keeping tape horizontal.

### SIZE CHART

	XS	S	M	L	XL	2XL	3XL	4XL
Chest	32-34	35-37	38-40	41-43	44-47	48-51	52-56	57-61

### COLOR INFORMATION



Black  
PMS BLACK C



Royal Heather  
PMS 3597C



Shadow Grey  
Heather  
PMS COOL GREY  
10C



True Navy  
PMS 533C



White