



MERCER+METTLE™

## Mercer+Mettle™ Puffy Jacket MM7210



Professional and polished while protecting from the elements, this lofty, high-performing puffy is intentionally designed to lend dependable warmth and transitional style for downtown or out-of-town. The DWR finish sheds moisture while the blown-in synthetic insulation gives the soft, lightweight and pliable effect of down with easy washability.

**Fabric+Weight**

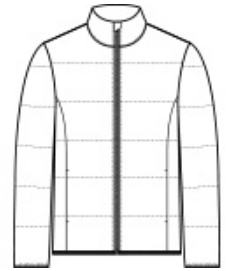
- 100% polyester
- 5K/3K waterproof breathable fabric
- 12-ounce, 100% polyester blown insulation

**Features+Benefits**

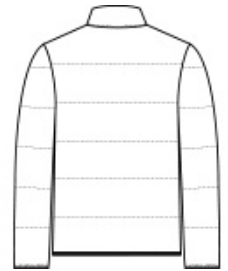
- Zip-through collar
- Molded front zipper
- Hidden, zippered hand pockets
- Elastic binding at cuffs and hem

**CARE INSTRUCTIONS**

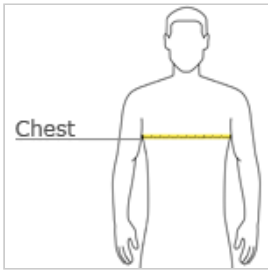
Machine Wash Cold Gentle Cycle With Like Colors. Only Non-Chlorine Bleach When Needed. Tumble Dry Low. Cool Iron If Necessary. Do Not Dry Clean.



front



back

**HOW TO MEASURE****CHEST WIDTH**

Measure under the arm and around the fullest part of the chest with arms down, keeping tape horizontal.

**SIZE CHART**

	2XL	3XL	4XL	XS	S	M	L	XL
Chest	48-51	52-56	57-61	32-34	35-37	38-40	41-43	44-47

**COLOR INFORMATION**Anchor Grey  
PMS 426CDeep Black  
PMS BLACK CNight Navy  
PMS 532CTownsend Green  
PMS NO MATCH