



MERCER+METTLE™ Women's Stretch Open-Front Cardigan MM3015



Made for moving on and off the clock, this comfy cocoon cardi offers a relaxed fit and fine fleece fabric. Clean design lines, like a back yoke and integrated pockets distinguish its forward-thinking silhouette.

Fabric+Weight

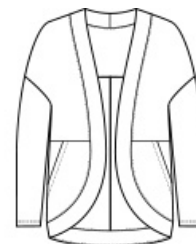
- 7.4-ounce, 53/41/6 rayon/poly/spandex French terry

Features+Benefits

- Softly dropped shoulders
- Back yoke and seaming detail
- Integrated front pockets
- Relaxed fit

CARE INSTRUCTIONS

Machine Wash Cold With Like Colors. Do Not Use Fabric Softener. Do Not Bleach. Tumble Dry Low. Remove Promptly. Cool Iron If Necessary.

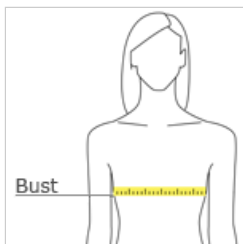


front



back

HOW TO MEASURE



BUST

Measure under the arm and around the fullest part of the bust with arms down, keeping tape horizontal.

SIZE CHART

	XS	S	M	L	XL	2XL	3XL	4XL
Size	2	4/6	8/10	12/14	16/18	20/22	24/26	28/30
Bust	32-34	35-36	37-38	39-41	42-44	45-47	48-51	52-55

COLOR INFORMATION



Anchor Grey
PMS 426C



Deep Black
PMS BLACK C



Gusty Grey
PMS COOL GREY
8C



Night Navy
PMS 532C