



## MERCER+METTLE™ Double-Knit Bomber MM3000



Smart, stylish and made for layering night or day, fleece jackets blend a sport-inspired shape with a casual-cool attitude. They offer all the traditional bomber design cues, like rib knit collar and cuffs, with a more style-forward, streamlined fit.

### Fabric+Weight

- 8.3-ounce, 100% double-knit polyester

### Features+Benefits

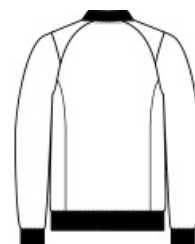
- Easy care
- Rib knit collar and cuffs
- Exposed zipper with matte black pull
- Front pockets

### CARE INSTRUCTIONS

Turn Garment Inside Out. Machine Wash Cold With Like Colors. Do Not Use Fabric Softener. Do Not Bleach. Tumble Dry Low. Remove Promptly. Cool Iron. If Necessary.

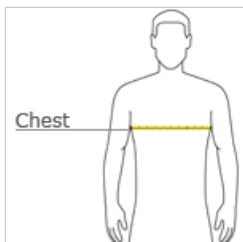


front



back

### HOW TO MEASURE



#### CHEST WIDTH

Measure under the arm and around the fullest part of the chest with arms down, keeping tape horizontal.

### SIZE CHART

	XS	S	M	L	XL	2XL	3XL	4XL
Chest	32-34	35-37	38-40	41-43	44-47	48-51	52-56	57-61

### COLOR INFORMATION



Anchor Grey  
PMS 426C



Deep Black  
PMS BLACK C



Night Navy  
PMS 532C



Townsend Green  
PMS NO MATCH