

[View PDF Print Email](#)



MERCER+METTLE™ Stretch Jersey Polo MM1014



For a more style-forward polo, everyday pique knit is replaced with a soft jersey blend for a subtle drape and a smooth hand. Moisture-wicking and self-turned cuffs and hems lend cool vibes, all around.

Fabric+Weight

- 5-ounce, 92/8 poly/spandex jersey
- 6.2-ounce, 94/6 poly/spandex jersey (White)

Features+Benefits

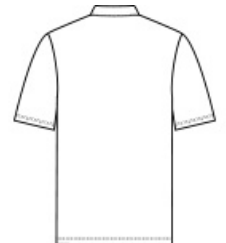
- Moisture-wicking
- Self-collar with band
- 3-button placket
- Smoke satin-finished, rimmed buttons
- Black satin-finished, rimmed buttons (Deep Black)
- Self-turned cuffs and hem
- Notched vents at hem

CARE INSTRUCTIONS

Machine Wash Cold With Like Colors. Do Not Use Fabric Softener. Do Not Bleach. Tumble Dry Low. Remove Promptly. Cool Iron If Necessary.

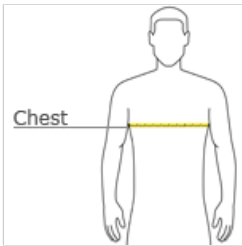


front



back

HOW TO MEASURE



CHEST WIDTH

Measure under the arm and around the fullest part of the chest with arms down, keeping tape horizontal.

SIZE CHART

	XS	S	M	L	XL	2XL	3XL	4XL
Chest	32-34	35-37	38-40	41-43	44-47	48-51	52-56	57-61

COLOR INFORMATION

Anchor Grey PMS 426C	Deep Black PMS BLACK C	Insignia Blue PMS NO MATCH	Night Navy PMS 532C	Townsend Green PMS NO MATCH	White