

SPORT-TEK®**Sport-Tek® Ladies Exchange 1.5 Long Sleeve Crew. LST710**

Why did we name this stretchable crew the 1.5? Because it's light enough to wear as a tee, but warm enough to be a light layer.

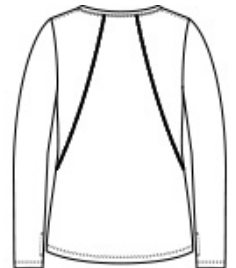
- 5.6-ounce, 88/12 poly/spandex
- Removable tag for comfort and relabeling
- Coverstitch seams throughout
- Thumbholes to keep hands warm

CARE INSTRUCTIONS

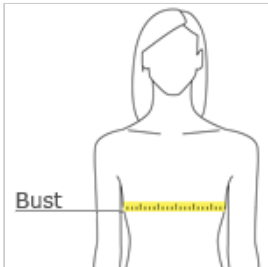
Machine wash with like colors. Do not use fabric softener, only non-chlorine bleach, when needed. Tumble dry low, remove promptly. Cool iron if necessary. Do not dry clean.



front



back

HOW TO MEASURE**BUST**

Measure under the arm and around the fullest part of the bust with arms down, keeping tape horizontal.

SIZE CHART

	XS	S	M	L	XL	XXL	3XL	4XL
Size	2	4/6	8/10	12/14	16/18	20/22	24/26	28/30
Bust	32-34	35-36	37-38	39-41	42-44	45-47	48-51	52-55

COLOR INFORMATION

Dark Denim
Heather
PMS 2380C



Graphite Heather
PMS COOL GRAY
11C



Grey Heather
PMS COOL GRAY
10C



Hyacinth Heather
PMS 3543C



True Royal Heather
PMS 7687C