

[View PDF Print Email](#)



# OGIO® Ladies Luuma Sherpa Full-Zip. LOG815

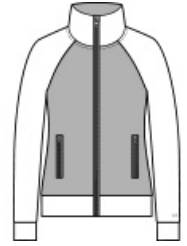


A sherpa fleece body joins performance poly for the ultimate in coziness and mobility.

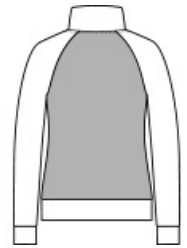
- 13.6-ounce, 100% polyester sherpa fleece body
- 8.3-ounce, 52/44/4 poly/cotton/spandex outer collar, sleeves and hem
- Exaggerated cowl neck
- OGIO heat transfer label for tag-free comfort
- Exposed molded zippers with debossed O zipper pulls
- O heat transfer on left sleeve
- Front zippered pockets

**CARE INSTRUCTIONS**

Machine wash cold with like colors. Do not bleach. Tumble dry low. Do not iron. Do not use fabric softner. Do not dry clean.

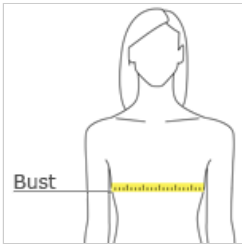


front



back

**HOW TO MEASURE**



**BUST**

Measure under the arm and around the fullest part of the bust with arms down, keeping tape horizontal.

**SIZE CHART**

	XS	S	M	L	XL	2XL	3XL	4XL
Size	2	4/6	8/10	12/14	16/18	20/22	24/26	29/30
Bust	32-34	35-36	37-38	39-41	42-44	45-47	48-51	52-55

**COLOR INFORMATION**



Blacktop  
PMS BLACK C



Ivory Snow