



## OGIO® Ladies Command Long Sleeve Scoop Neck LOG150

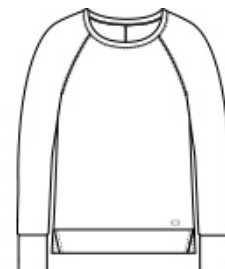


Take command wherever you go in this scoop neck that combines OGIO edge, a hint of fine merino wool and a feminine neckline.

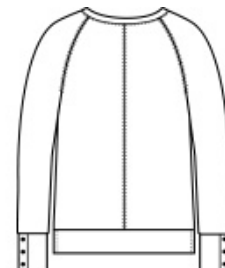
- 4.9-ounce, 85/15 poly/merino wool
- Double-knit with polyester wool jersey face and polyester mesh back
- OGIO heat transfer label for tag-free comfort
- Raglan sleeves
- Matte black metal 3-snap cuffs
- Black reflective O heat transfer on front left hem

### CARE INSTRUCTIONS

Machine Wash Cold With Like Colors. Do Not Use Fabric Softener. Do Not Bleach. Tumble Dry Low. Remove Promptly. Cool Iron If Necessary.

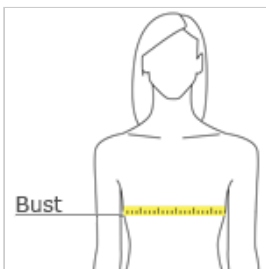


front



back

### HOW TO MEASURE



#### BUST

Measure under the arm and around the fullest part of the bust with arms down, keeping tape horizontal.

### SIZE CHART

	XS	S	M	L	XL	2XL	3XL	4XL
Size	2	4/6	8/10	12/14	16/18	20/22	24/26	28/30
Bust	32-34	35-36	37-38	39-41	42-44	45-47	48-51	52-55

### COLOR INFORMATION



Blacktop  
PMS BLACK C



Gear Grey  
PMS COOL GRAY  
11C



Spar Blue  
PMS 2189C