

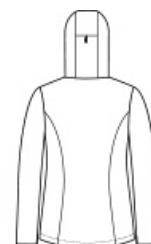
PORT AUTHORITY.**Port Authority® Ladies Collective Tech Outer Shell Jacket L920**

For an outer shell that delivers a refined, streamlined look alongside technical weatherproof durability, these jackets come with reflective details, waterproof zippers and a water-shedding durable water-repellent (DWR) finish.

- 100% polyester shell with DWR finish
- 100% polyester lining
- Weatherproof outer layer into which other Collective styles can be zipped and secured by snap attachments
- 5000MM fabric waterproof rating
- 5000G/M2 fabric breathability rating
- Slightly longer length
- Fully seam-sealed
- Attached, adjustable hood with locking drawcord
- Matte waterproof reverse coil zippers
- Front and back seaming
- Port Pocket™ for easy embroidery access
- Gunmetal reflective taping details at shoulders and pockets
- Adjustable cuffs
- Adjustable hem



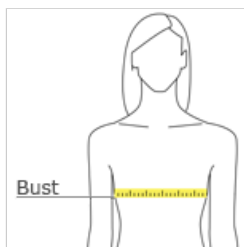
front



back

CARE INSTRUCTIONS

Machine Wash Cold Separately. Do Not Use Fabric Softener.
Do Not Bleach. Do Not Iron. Tumble Dry Low.

HOW TO MEASURE**BUST**

Measure under the arm and around the fullest part of the bust with arms down, keeping tape horizontal.

SIZE CHART

	XS	S	M	L	XL	XXL	3XL	4XL
Size	2	4/6	8/10	12/14	16/18	20/22	24/26	28/30
Bust	32-34	35-36	37-38	39-41	42-44	45-47	48-51	52-55

COLOR INFORMATION

Deep Black
PMS BLACK C



Graphite
PMS 7540C



True Royal
PMS 7687C