

**Port Authority® Ladies Long Textured Hooded Soft Shell Jacket. L306**



A long, feminine fit makes this water resistant soft shell the right choice for daily commutes. A textured hood and body lining adds warmth and unexpected character.

- 96/4 poly/spandex woven shell bonded to 100% polyester microfleece with laminated film insert to repel water and wind
- 1000MM fabric waterproof rating
- 1000G/M<sup>2</sup> fabric breathability rating
- Hood with locking drawcords for adjustability
- Storm flap with chin guard
- Two-way zipper
- Locking drawcord waist for adjustability
- Open cuffs
- Front zippered pockets
- Back hem vent for easy movement

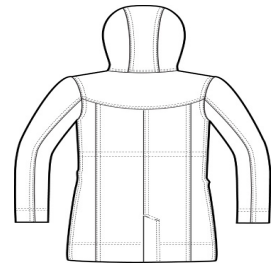
**CARE INSTRUCTIONS**

Machine wash cold with like colors. Only non-chlorine bleach if needed. Tumble dry low, remove promptly. Cool iron if necessary.

[Tips For Effectively Screen Printing Polyester Fabrics](#)

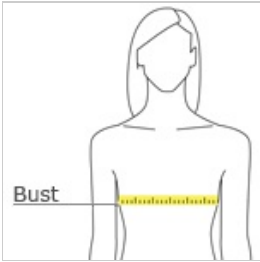


front



back

**HOW TO MEASURE**



**BUST**  
With arms down at sides, measure around the upper body, under arms and around the fullest part of the bust.

**SIZE CHART**

	XS	S	M	L	XL	XXL	3XL	4XL
Size	2	4/6	8/10	12/14	16/18	20/22	24/26	28/30
Bust	32-34	35-36	37-38	39-41	42-44	45-47	48-51	52-55

**COLOR INFORMATION**



Black  
PMS Ntr Black C