

PORT AUTHORITY.**Port Authority® Fine Pique Blend Blocked Polo K831**

Bold colorblocking on the chest, sleeves and back yoke give this moisture-wicking polo instant appeal whether you're going 18 or going into the office.

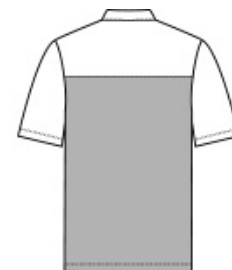
- 4.3-ounce, 57/43 cotton/poly pique
- Moisture-wicking
- Self-fabric collar with collar stand
- Forward shoulder
- 3-button placket
- Dyed-to-match buttons (Dark Smoke buttons on Charcoal Heather and Black Heather)
- Straight hem
- Tag-free label

CARE INSTRUCTIONS

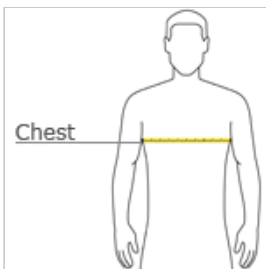
Machine Wash Cold With Like Colors. Do Not Use Fabric Softener. Do Not Bleach. Tumble Dry Low. Warm Iron If Necessary.



front



back

HOW TO MEASURE**CHEST WIDTH**

Measure under the arm and around the fullest part of the chest with arms down, keeping tape horizontal.

SIZE CHART

| | XS | S | M | L | XL | 2XL | 3XL | 4XL |
|-------|-------|-------|-------|-------|-------|-------|-------|-------|
| Chest | 32-34 | 35-37 | 38-40 | 41-43 | 44-46 | 47-49 | 50-53 | 54-57 |

COLOR INFORMATION

Aegean Blue/
Aegean Blue
Heather
PMS 4154C



Deep Black/
Charcoal Heather
PMS BLACK C



River Blue Navy/
River Blue Navy
Heather
PMS 4280C