

**PORT AUTHORITY.**

## Port Authority® Microterry 1/4-Zip Pullover K825



A layering must-have made of ultra-soft, snag-resistant microterry-it's as comfortable as it is polished in appearance.

- 6.8-ounce, 62/33/5 poly/rayon/spandex microterry
- Snag-resistant
- Tag-free
- Cadet collar with reverse-coil dyed-to-match zipper with matte black pull
- Back yoke
- Self-turned cuffs and hem

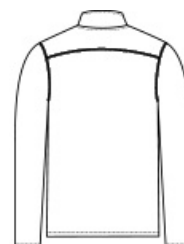
Due to the nature of performance fabrics, special care must be taken throughout the printing process.

**CARE INSTRUCTIONS**

Machine Wash Cold With Like Colors. Do Not Bleach.  
Tumble Dry Low. Cool Iron If Necessary.

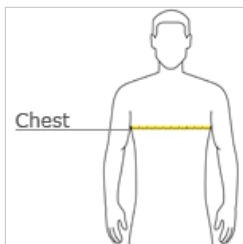


front



back

**HOW TO MEASURE**



**CHEST WIDTH**

Measure under the arm and around the fullest part of the chest with arms down, keeping tape horizontal.

**SIZE CHART**

	XS	S	M	L	XL	2XL	3XL	4XL
Chest	32-34	35-37	38-40	41-43	44-46	47-49	50-53	54-57

**COLOR INFORMATION**



Aegean Blue



Charcoal  
PMS 426C



Deep Black  
PMS BLACK C



River Blue Navy  
PMS 7547C