

Eddie Bauer® Quilted Jacket EB510



Minimal bulk meets maximized performance in this quilted jacket that is built for your cold-weather adventures.

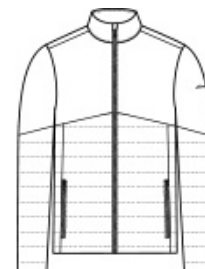
Exposed, molded zippers with Eddie Bauer logo pulls.

Zippered hand pockets. Elastic at cuffs. Adjustable locking drawcord hem. Contrast Eddie Bauer heat transfer logo on left sleeve.

Made of 100% polyester shell and lining. 5-ounce, 100% polyester fill. Durable water-repellent (DWR) finish.

CARE INSTRUCTIONS

Machine Wash Cold With Like Colors. Do Not Use Fabric Softener. Do Not Bleach. Tumble Dry Low. Cool Iron. Do Not Dry Clean.

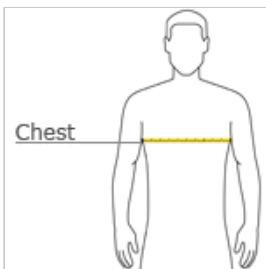


front



back

HOW TO MEASURE



CHEST WIDTH

Measure under the arm and around the fullest part of the chest with arms down, keeping tape horizontal.

SIZE CHART

	XS	S	M	L	XL	2XL	3XL	4XL
Chest	32-34	35-37	38-40	41-43	44-46	48-50	52-54	55-57

COLOR INFORMATION



Cobalt Blue



Deep Black



Iron Gate



River Blue Navy