



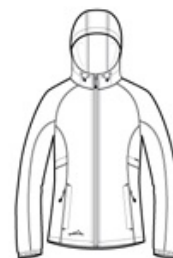
Ladies Packable Wind Jacket. EB501



Wind was the inspiration for this compact layer. Plus, it packs down into a pocket, making it easy to carry wherever you go. Hood with locking drawcords for adjustability, contrast reverse coil zipper, underarm vents, front zippered pockets with packable right pocket, elastic cuffs and an open hem. Contrast Eddie Bauer logo on right hem. Made of 100% nylon.

CARE INSTRUCTIONS

Secure all garment before laundering Machine wash warm delicate separately Use mild detergent rinse throughly Do not bleach Tumble dry low or for best result line dry Do not iron. Do not dry clean

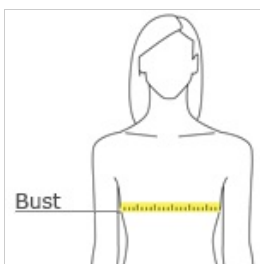


front



back

HOW TO MEASURE



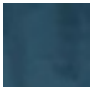




BUST

With arms down at sides, measure around the upper body, under arms and around the fullest part of the bust.

SIZE CHART

	XS	S	M	L	XL	2XL	3XL	4XL
Size	2	4/6	8/10	12/14	16/18	20/22	24/26	28/30
Bust	32-33	34-35	36-37	38-40	41-43	44-46	47-49	50-52

COLOR INFORMATION

				
Adriatic Blue PMS 7546 C	Black PMS BTR BLACK C	Black Cherry PMS 7643 C	Brilliant Blue PMS 7687 C	Grey Steel PMS 426 C