



## Eddie Bauer® Woodland Shirt Jac EB228



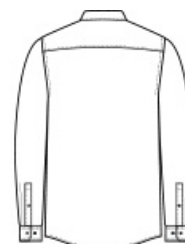
Whether you're spending time inside or outside in cool temps, the high-pile fleece interior of these rugged-looking shirt jacs will keep you warm. Eddie Bauer logo snap-front closure and snap-close chest pockets. Handwarmer pockets. Eddie Bauer woven label at left chest pocket. Made of 10.3-ounce, 100% polyester microfleece bonded with 100% polyester high-pile fleece interior. 100% polyester woven details.

### CARE INSTRUCTIONS

Machine Wash Cold With Like Colors. Do Not Use Fabric Softener. Only Non-Chlorine Bleach When Needed. Tumble Dry Low. Cool Iron If Necessary.

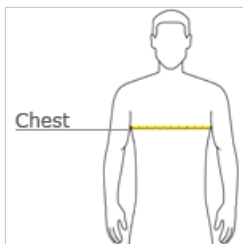


front



back

### HOW TO MEASURE



#### CHEST WIDTH

Measure under the arm and around the fullest part of the chest with arms down, keeping tape horizontal.

### SIZE CHART

	XS	S	M	L	XL	2XL	3XL	4XL
Chest	32-34	35-37	38-40	41-43	44-46	48-50	52-54	55-57

### COLOR INFORMATION



Grey Steel/ Bone  
PMS PATTERNED



Radish/ Black  
PMS PATTERNED