



## District® Perfect Tri® Long Sleeve Henley DT145



Three yarns form a perfect easygoing look in this henley version of our popular long sleeve tee.

- 4.5-ounce, 50/25/25 poly/combed ring spun cotton/rayon, 32 singles
- 1x1 rib knit neck and cuffs
- 3-button placket
- Shoulder to shoulder taping
- Tear-away label

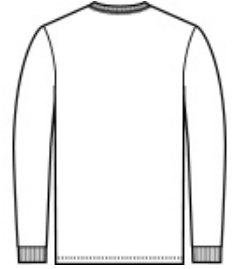
*Due to the nature of cotton/polyester blends in dark and neon colors, special care must be taken throughout the decoration process when heat is applied for curing. Please consult with your decorator or material supplier.*

### CARE INSTRUCTIONS

Machine Wash Cold With Like Colors. Only Non-Chlorine Bleach When Needed. Tumble Dry Low. Warm Iron If Necessary.

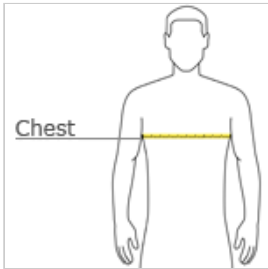


front



back

### HOW TO MEASURE



#### CHEST WIDTH

Measure under the arm and around the fullest part of the chest with arms down, keeping tape horizontal.

### SIZE CHART

	XS	S	M	L	XL	2XL	3XL	4XL
Chest	32-34	35-37	38-40	41-43	44-46	47-49	50-53	54-57

### COLOR INFORMATION



Black Frost  
PMS 426C



Heathered Charcoal  
PMS 7540C



Military Green Frost  
PMS 7771C



Natural  
PMS NO MATCH



Navy Frost  
PMS 2379C