

[View PDF Print Email](#)



Carhartt® Tall Thermal-Lined Duck Active Jac. CTTJ131



Whether you're on a land survey or construction road crew, this wind- and water-repelling hooded jacket is designed to keep you comfortable when the weather is iffy.

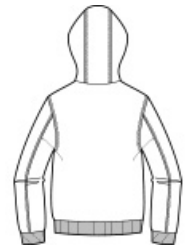
-
- 12-ounce, firm hand, 100% ring spun cotton duck canvas
- Water-repellent and wind-resistant
- Polyester thermal lining
- Attached thermal-lined three-piece hood with drawcord closure
- Full-length brass front zipper
- Two interior pockets: one zippered, one hook and loop
- Two large lower-front pockets
- Rib knit cuffs and waistband
- Carhartt-strong, triple-stitched main seams
- Carhartt label sewn on left pocket

CARE INSTRUCTIONS

Color Black: Machine wash cold with like colors, Do not bleach, Tumble dry low remove promptly, Steam iron shell only, All colors except Black: Machine wash warm with like colors, Do not bleach, Tumble dry medium remove promptly, Steam iron shell only.

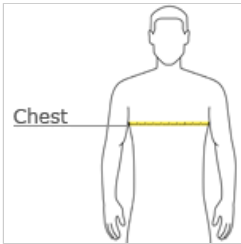


front



back

HOW TO MEASURE



CHEST WIDTH

Measure under the arm and around the fullest part of the chest with arms down, keeping tape horizontal.

SIZE CHART

	LT	XLT	2XLT	3XLT	4XLT
Chest	41-43	44-46	47-49	50-53	54-57

COLOR INFORMATION



Black



Carhartt Brown
PMS 463C