



## Carhartt® Super Dux™ Soft Shell Vest CT105535

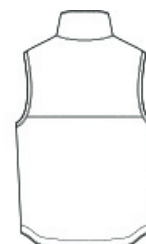


This soft shell vest combines iconic Carhartt looks with unbeatable weather protection. The nylon is 35% lighter than traditional duck but with twice the abrasion resistance.

- 8.1-ounce, 97/3 nylon/elastane
- 100% polyester stretch taffeta lining
- Rain Defender® durable water repellent
- Wind Fighter® technology tames wind
- Rugged Flex® technology for ease of movement
- Reverse coil center front zipper with kissing welt
- Zip-through cadet collar
- Secure interior pockets
- Two lower front pockets
- Drop tail hem for added coverage
- Carhartt-strong, triple-stitched main seams
- Carhartt label sewn on left pocket
- Relaxed fit



front

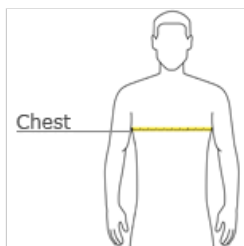


back

### CARE INSTRUCTIONS

Machine Wash Warm Like Colors. Non-Chlorine Bleach.  
Tumble Dry Low. Do Not Use Fabric Softeners. Cool Iron. Do  
Not Dry Clean. Exclusive Trimming.

### HOW TO MEASURE



#### CHEST WIDTH

Measure under the arm and around the fullest part of the chest with arms down, keeping tape horizontal.

### SIZE CHART

|       | S     | M     | L     | XL    | 2XL   | 3XL   |
|-------|-------|-------|-------|-------|-------|-------|
| Chest | 34-36 | 38-40 | 42-44 | 46-48 | 50-52 | 54-56 |

### COLOR INFORMATION



Black  
PMS BLACK C



Gravel  
PMS 11C



Greige  
PMS COOL GRAY  
1C