



# Carhartt® Storm Defender® Shoreline Jacket CT104670

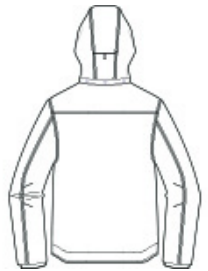


Our best-selling Shoreline Jacket has been updated.

- 7.3-ounce, 100% nylon oxford shell
- Storm Defender® waterproof, breathable technology
- Wind Fighter® technology tames wind
- 10K/10K waterproof/breathable protection rating
- Fully taped waterproof seams
- Polyester mesh lining
- Taffeta lining in sleeves and hood for easy on/off
- Adjustable, removable roll-away hood
- Full-zip front with inner and outer storm flaps
- Two interior pockets with hook and loop closures
- Left chest pocket with secure waterproof zipper and storm flap
- Two lower front pockets with zippered closures and storm flaps
- Adjustable cuffs with hook and loop closures and inner sleeve storm cuffs
- Adjustable drop tail hem
- Carhartt-strong, triple-stitched main seams
- Carhartt label sewn on chest pocket
- Loose fit



front

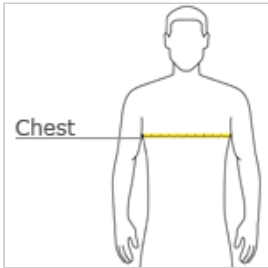


back

## CARE INSTRUCTIONS

Close All Zippers. Machine Wash Warm Like Colors. Non-Chlorine Bleach. Tumble Dry Low. Do Not Use Fabric Softeners. Cool Iron. Do Not Dry Clean. Exclusive Trimming.

## HOW TO MEASURE



### CHEST WIDTH

Measure under the arm and around the fullest part of the chest with arms down, keeping tape horizontal.

## SIZE CHART

	S	M	L	XL	2XL	3XL	4XL
Chest	34-36	38-40	42-44	46-48	50-52	54-56	58-60

## COLOR INFORMATION



Black  
PMS BLACK C



Moss  
PMS 7770C



Navy  
PMS 533C



Shadow Grey  
PMS 7540C