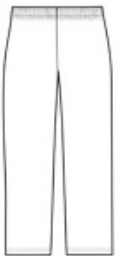




- 9-ounce, 50/50 cotton/poly
- Moisture-wicking properties
- Heat transfer label
- Differential rise for better fit
- Covered elastic waistband with drawcord
- Jersey-lined side-seam pockets
- Slightly tapered leg with open double-needle hem

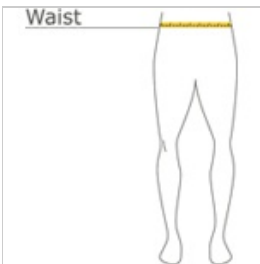


front



back

HOW TO MEASURE



WAIST

Measure waist at the height pants are normally worn, and keep tape comfortably loose.

SIZE CHART

	S	M	L	XL	2XL
Waist	24-26	28-29	30-31	32-33	36-37

COLOR INFORMATION



Black
PMS 426 C



Charcoal
PMS COOL GREY
10 C



Navy
PMS 533 C



Sport Grey
PMS COOL GREY
7 C

*Not all sizes are available in every color.